

Product information

X2 provides stretch, flammability and abrasion performance in an unobstrusive background grey melange effect. The subtle dark tones create texture and dimension within a playful colour palette of brights through to subtle neutrals. The mottled appearance is also a practical solution to help disguise dirt and stains.

X2 is our first 100% recycled fabric to include closed loop content. 25% of the raw material is derived from our own waste streams, specifically polyester selvedges and yarn remnants.

X2 is certified to the EU Ecolabel.



UK/16/005

Technical information

UK

Composition

100% Recycled Flame Retardant Polyester.
Non metallic dyestuffs

Environmental

Made from 100% recycled polyester.
Certified to the EU Ecolabel.

Width

140cm minimum

Weight

310g/m2 ±5% (435g/lin.m ±5%)

Abrasion Resistance

5 year guarantee / 100,000 Martindale cycles (full details available)

Flammability

BS EN 1021 - 1:2014 (cigarette)
BS EN 1021 - 2:2014 (match)
BS 5852:2006 Section 4 Ignition Source 5
BS 7176:2007 Medium Hazard
DIN 4102 B1
NF D 60-013:2006
UNI 9175 1M

Note: Flammability performance is dependent on foam used.

Light Fastness

6 (ISO 105 - B02:2014)

Fastness to Rubbing

Wet: 4, Dry: 4 (ISO 105 - X12:2002)

Cleaning

Washable to 60°C. Wipe clean with a damp cloth or shampoo using proprietary upholstery shampoo.

Please note that seam performance is dependent on seam construction and needle and thread type. We recommend that appropriate sewing advice be taken.

Note: Batch to batch variations in shade may occur within commercial tolerances. We reserve the right to alter technical specifications without notice. The Unregistered Design Rights and the Copyright in all designs are the exclusive property of Camira Fabrics Limited.

D

Zusammensetzung

100% Recyceltes schwerentflammbares Polyester.
Nicht schwermetallhaltige Farbstoffe

Umweltfreundlich

Hergestellt aus 100% recycelten Polyester.
Nach Zertifikat EU Ecolabel.

Breite

140cm nutzbare Breite

Gewicht

310g/m2 ±5% (435g/dfd.M ±5%)

Scheuerfestigkeit

5 Jahre Garantie / 100,000 Martindale Scheuertouren (Details auf Anfrage)

Feuersicherung

BS EN 1021 - 1:2014 (Zigarettestest)
BS EN 1021 - 2:2014 (Streichholztest)
BS 5852:2006 Section 4 Ignition Source 5
BS 7176:2007 Medium Hazard
DIN 4102 B1
NF D 60-013:2006
UNI 9175 1M

Bemerkung: Schwerentflammbarkeit hängt von verwendetem Schaum ab

Lichtechtheit

6 (ISO 105 - B02:2014)

Reibechtheit

Nass: 4, Trocken: 4 (ISO 105 - X12:2002)

Reinigung

Waschbar bis 60°C. Regelmässig staubsaugen. Dazu mit einem feuchten Tuch abwischen, oder mit einem speziellen Polsterschaum behandeln.

Eine optimale Nahtausreissfestigkeit hängt von der Nahtfahne, der verwendeten Nadel und dem Näh-Garn ab. Wir empfehlen daher Nähversuche durchzuführen.

Wichtig: Handelsübliche Farbabweichungen können auftreten und berechtigen nicht zur Reklamation. Wir behalten uns die Änderung technischer Spezifikationen vor. Die registrierten und nicht registrierten Urheberrechte der Dessinierungen sind ausschliessliches Eigentum der Camira Fabrics Limited.

Contact

UK Head Office:	+44 (0)1924 490491
Germany:	+49 7031 60 84 30
Scandinavia:	+45 32 55 20 01
France/Benelux:	+32 56 227 266
USA:	+1 616 288 0655
China:	+86 (0) 21 6133 1812

www.camirafabrics.com



F

Composition

100% Polyester retardateur de flamme recyclé.
Teintures non métalliques

Écologique

Fabriqué d'un polyester 100% recycle avec le certificat EU Ecolabel.

Largeur

140cm minimum

Poids

310g/m2 ±5% (435g/m.l ±5%)

Résistance à l'abrasion

Garantie de 5 ans / 100,000 Martindale tours (renseignements complémentaires disponibles)

Flammabilité

BS EN 1021 - 1:2014 (cigarette)
BS EN 1021 - 2:2014 (allumette)
BS 5852:2006 Section 4 Ignition Source 5
BS 7176:2007 Medium Hazard
DIN 4102 B1
NF D 60-013:2006
UNI 9175 1M

Notez: Réaction au feu dépend de la mousse utilisée.

Solidité à la lumière

6 (ISO 105 - B02:2014)

Solidité au Frottement

Mouillé: 4, Sec: 4 (ISO 105 - X12:2002)

Nettoyage

Lavable jusqu'à 60°C. Aspirer régulièrement. Essuyer avec une étoffe humide ou nettoyer à l'aide d'un produit approprié pour tissus d'ameublement

Veillez noter que la performance du joint dépend de sa construction ainsi que de l'aiguille et du type de fil utilisés.

Remarque: une variation de couleurs peut provenir (commercialement tolérable). Nous réservons le droit de changer les spécifications techniques sans préavis. Les Droits de Conception non-enregistrés et les droits d'auteur de tous les motifs sont la propriétés exclusives de Camira Fabrics Limited.

ES

Composición

100% Resistente al fuego Poliéster Reciclado.
Tintes no metálicos

Ambiental

Hecho de 100% de poliéster reciclado.
Certificado con EU Flower.

Ancho

140cm mínimo

Peso

310g/m2 ±5% (435g/lin.m ±5%)

Resistencia a la abrasión

Garantía de uso 5 años / 100,000 Martindale ciclos (más información disponible bajo consulta)

Inflamabilidad

BS EN 1021 - 1:2014 (cigarillo)
BS EN 1021 - 2:2014 (cerilla)
BS 5852:2006 Section 4 Ignition Source 5
BS 7176:2007 Medium Hazard
DIN 4102 B1
NF D 60-013:2006
UNI 9175 1M

Condiciones ignífugas dependientes del tipo de foam utilizado.

Solidez a la luz

6 (ISO 105 - B02:2014)

Solidez al rozamiento

Húmedo: 4, Seco: 4 (ISO 105 - X12:2002)

Limpieza

Lavable hasta 60°C. Limpiar con aspiradora frecuentemente. Bien lavar con un paño húmedo o con un champú apropiado para tapicería.

Tenga en cuenta que el rendimiento de la costura depende de la construcción de la costura, además de la aguja y del tipo de rosca. Le recomendamos que se aconsejen para coser la costura.

Nota: las variaciones de lote a lote en la sombra se puede producir dentro de tolerancias comerciales. Nos reservamos el derecho a efectuar modificaciones técnicas sin previo aviso. Los derechos sobre los diseños no registrados y los derechos de autor en todos los diseños son propiedad exclusiva de Camira Fabrics Limited.

camira

www.camirafabrics.com

style with substance

X2



Task seating



Soft seating



Cigarette & Match



Medium Hazard
M1 / B1



Environmental



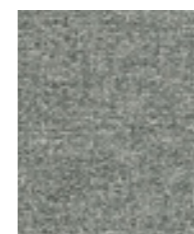
Year guarantee

Note:

Photographic fabric scans are not colour accurate. Always request actual fabric samples before ordering.



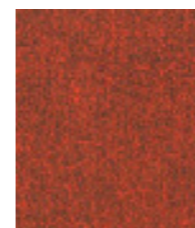
Percentage
AK016



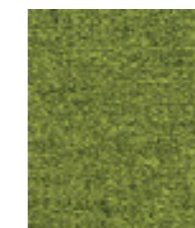
Number
AK020



Ratio
AK001



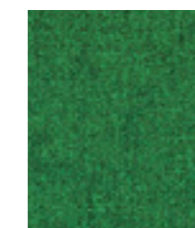
Divide
AK015



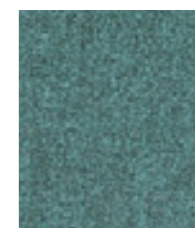
Algebra
AK005



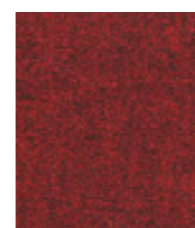
Subtract
AK013



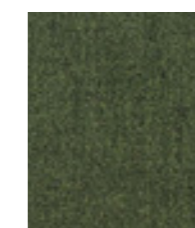
Fraction
AK003



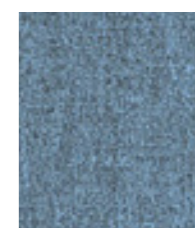
Polygon
AK002



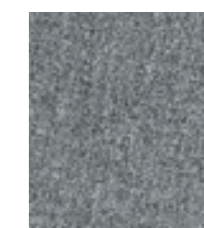
Multiply
AK014



Equation
AK004



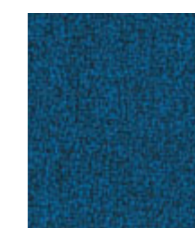
Value
AK006



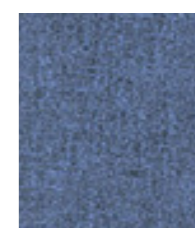
Positive
AK019



Median
AK011



Calculus
AK008



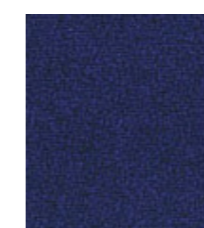
Maths
AK007



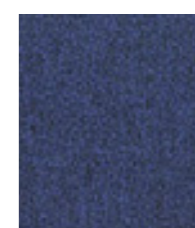
Arithmetic
AK018



Add
AK012



Metric
AK010



Acute
AK009



Formula
AK017